

# Setup Zebra Scanner for Power Rental

---

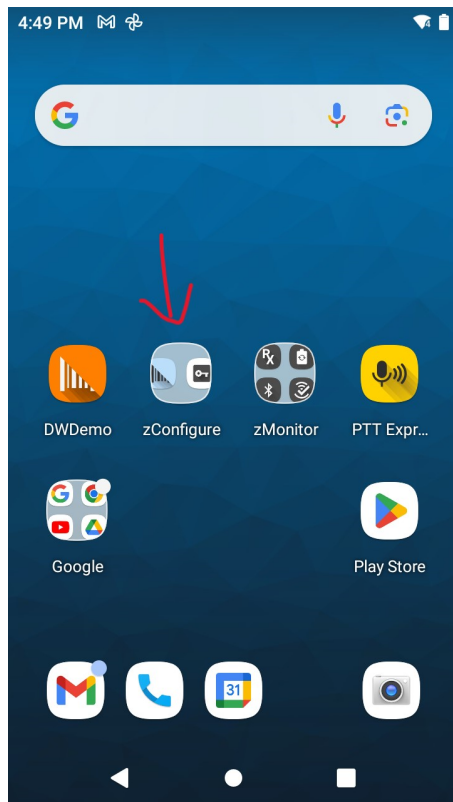
## Introduction

There are few configurations that needs to be done in the Zebra scanner to make the Power Apps running on that device with having integration with the attached external scanner.

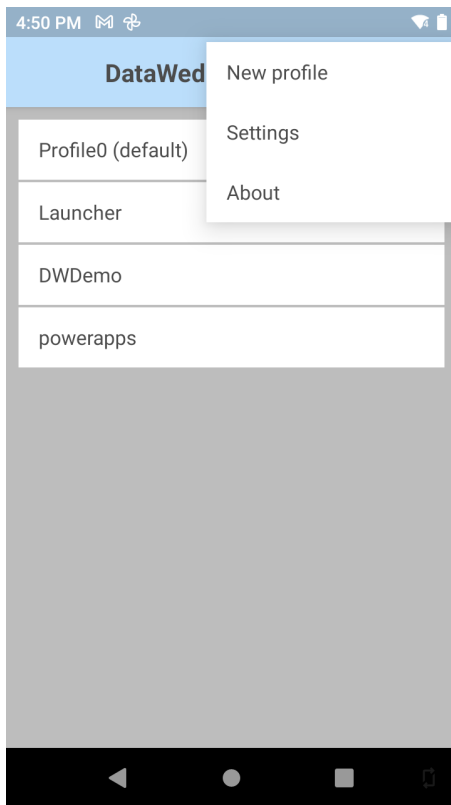
## Create DataWedge Profile

A DataWedge profile needs to be created for the powerapps which will hold the zebra scanner settings which are only applied to the powerapps.

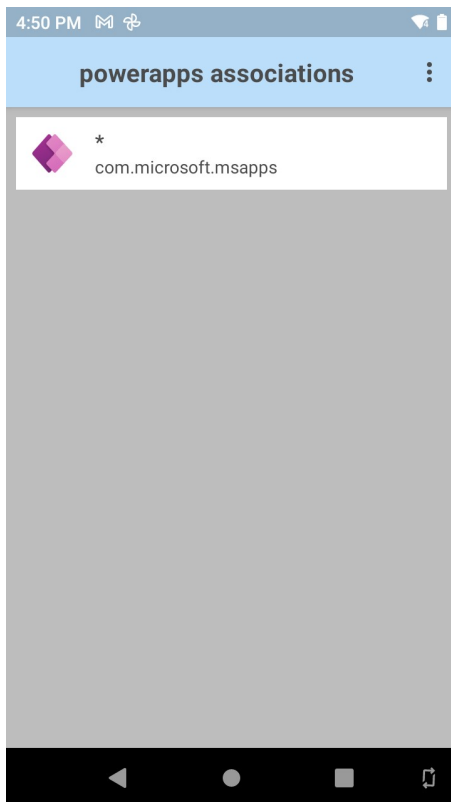
1. Navigate to the zConfigure App on the Zebra scanner.



2. Create a new profile inside DataWedge profiles by selecting the three dots from the right and clicking on New Profile



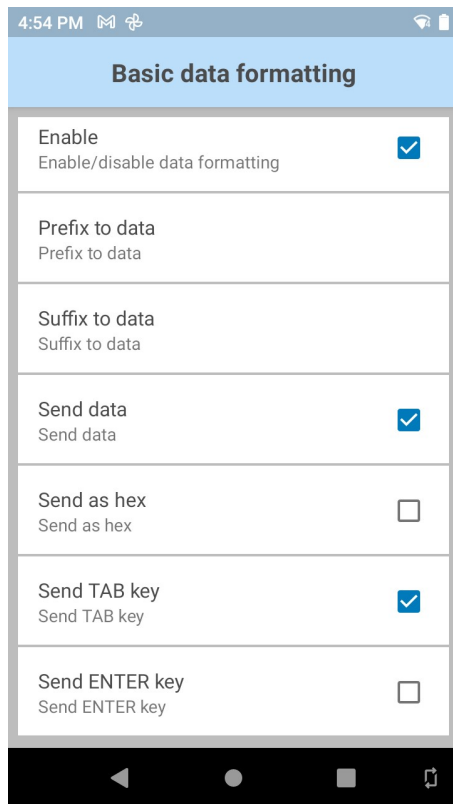
- 3) Name the profile as **powerapps** and click on Ok
4. Once the profile is created, open the profile and click on "Associated apps" option under Applications header
5. Select the App as shown below , once this option is selected all the settings we are going to do on this profile are only applicable to the power apps running on the device.



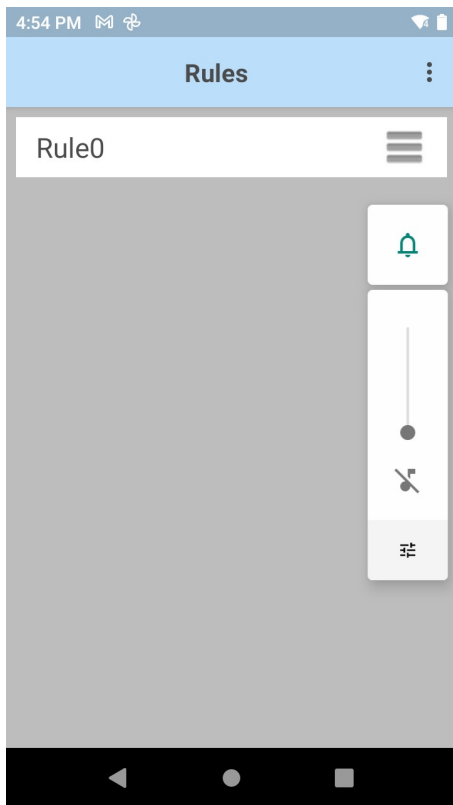
## Configure the Keystroke output

1. Navigate to the Keystroke output sub-section inside the profile and navigate to the Basic data formatting.

Make sure that the setting is enabled and both Send data and Send TAB key is also enabled as shown in the below screenshot.

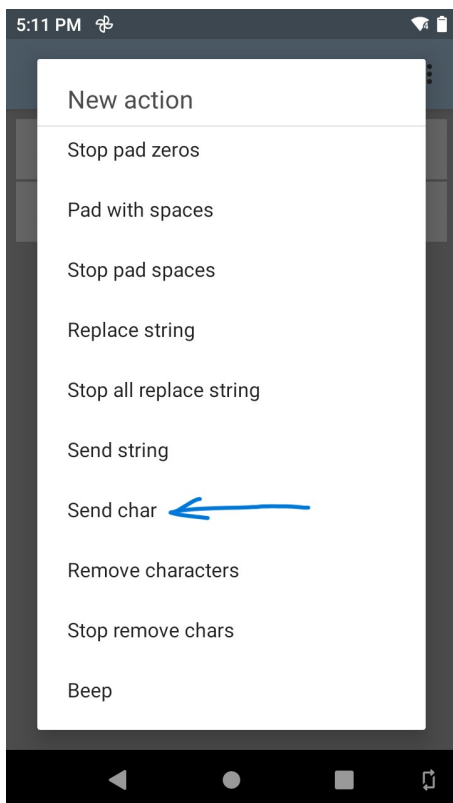


2. Once the basic formatting is done, Navigate to Advance data formatting inside the Keystroke output section.
3. Click on the Rules section and select the pre-configured Rule0.

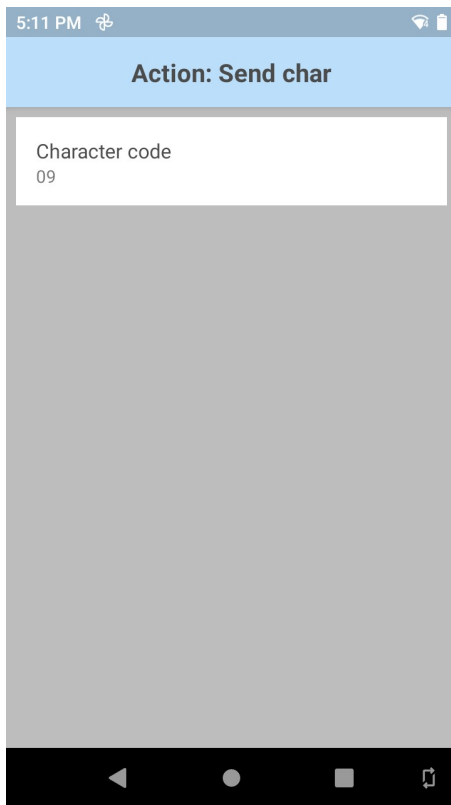


4. Click on the Actions(Configure Actions) Inside the rule and add a new action from the three dots on the right hand side of the screen.

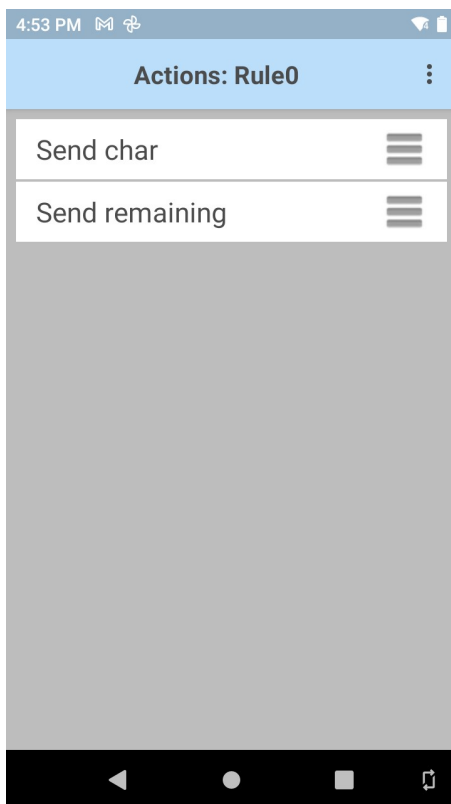
5. Section the action as Send char.



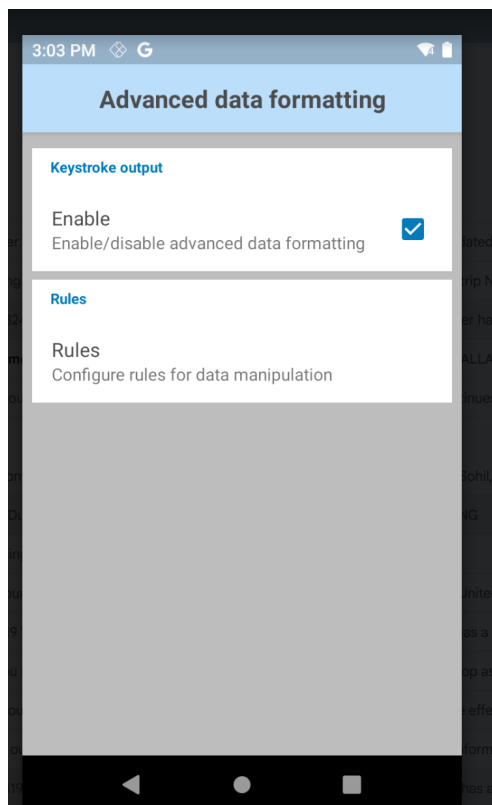
6. Configure the Send char action to have the Character code as **09** shown below -



7. Once the action is saved make sure to drag Send char action as the first action and Rule0 should look like this



8. Make sure that the advanced data formatting is enabled as shown below



9. Navigate back to the Profile options and select **Key event options**

10. Set the Key event delay as 500ms as shown below

